



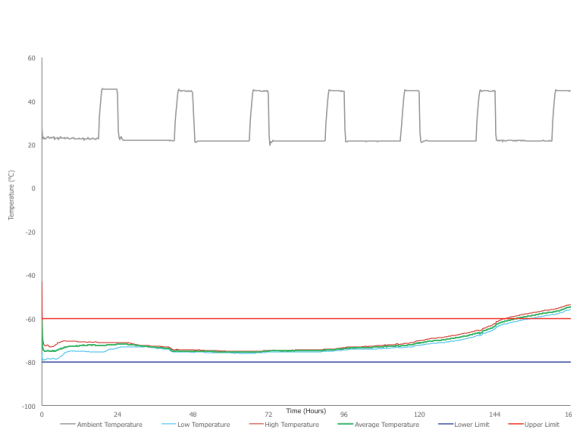
KT400D-60

Data Sheet

Features & Benefits

- 120 hour product protection -80°C to -60°C (deep frozen)
- Unique packouts provide unparalleled protection
- Can be pre-conditioned giving simple load, lock and deliver process
- Fully reusable solution
- Providing significant environmental advantages over disposable and semi-reusable systems
- Integral datalogger providing full audit trail and real-time internal and external temperature records
- Sub-pallet-sized payloads
- No human intervention throughout transit required

Container	Configuration Temp (°C)	External Dimensions (mm)	Internal Dimensions (mm)	Internal Payload (Litres)	System Tare Weight (kg)	Volumetric Weight (kg)
KT400D-60	-80 to -60	1200 x 800 x 1050	705 x 454 x 588	188	222	168



- +15 to +25 °C
- +2 to +8 °C
- 25 to -15 °C
- >-80 °C