



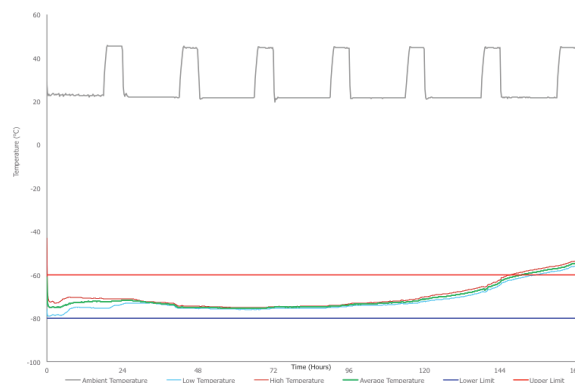
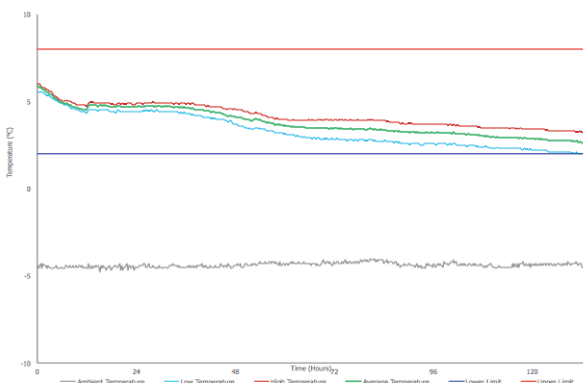
KT400

Data Sheet

Features & Benefits

- 120 hour product protection for -20°C (frozen), +5°C (refrigerated) and +20°C (controlled room temperature), using Phase-change technology
- Fully reusable solution
- Providing significant environmental advantages over disposable and semi-reusable systems
- Integral datalogger providing full audit trail and real-time internal and external temperature records
- Sub-pallet-sized payloads
- No human intervention throughout transit required

Container	Configuration Temp (°C)	External Dimensions (mm)	Internal Dimensions (mm)	Internal Payload (Litres)	System Tare Weight (kg)	Volumetric Weight (kg)
KT400D-60	-80 to -60	1200 x 800 x 1050	705 x 454 x 588	188	222	168
KT400D	-80 to -20	1200 x 800 x 1050	1020 x 610 x 750	467	72+	168
KT400F	-25 to -15	1200 x 800 x 1050	900 x 500 x 585	263	219	168
KT400R-S	+2 to +8	1200 x 800 x 1050	900 x 500 x 585	263	188	168
KT400R-H	+2 to +8	1200 x 800 x 1050	900 x 500 x 485	218	224	168
KT400T	+15 to +25	1200 x 800 x 1050	900 x 500 x 585	263	248	168



- +15 to +25 °C
- +2 to +8 °C
- 25 to -15 °C
- >-80 °C